

User manual Cartridge filling devices of the 990150 Series



Dear Customer

Thank you for purchasing your cartridge filling system 990150 Series.
These operating instructions are intended to ensure simple and safe operation of the device. Please read these instructions carefully before use and also observe the safety instructions given.

Your VIEWEG GmbH

Table of contents

1	Designated use.	2
2	For your safety	2
3	Scope of delivery.	3
4	About your cartridge filling device.	4
5	Preparation and filling process	4
	5.1 Preparation of the filling device	4
	5.2 Preparing the syringe barrels	5
	5.3 Filling procedure.	6
6	Maintenance and cleaning	6
7	Disposal	6
8	Declaration of conformity	7

1 Designated use

The cartridge filling device 990150 is used for clean and convenient filling of grease, epoxy resin, silicone or solder paste or other liquid materials into small syringe barrels.

Model 990150-B is suitable for transferring from EURO cartridges with external thread, models 990150-A-180 and 990150-A-360 for transfer from 180 ml, 360 ml and 600 ml Semco® cartridges with G 1/4" internal thread.

To transfer material into 3 cc to 55 cc small cartridges, a EURO or Semco® plastic cartridge is pushed into the metal cartridge sleeve of the filling device. The angle fitting, which is screwed into or onto the thread of the large cartridge, has a Luer-Lock connection to accommodate the syringe barrel.

2 For your safety

WARNING:
If this device is used for purposes other than those described in this manual, personal injury or property damage may result.
Use this equipment only in accordance with the instructions in this manual.
VIEWEG GmbH is not liable for personal injury or damage to property resulting from improper use of the equipment.



This includes improper use:

- Modifications to the device not expressly recommended in the user manual
- Use of incompatible or damaged spare parts
- Use of non-approved accessories or auxiliary equipment
- Use of a higher working pressure than specified

3 Scope of delivery

The following parts are included in the scope of delivery:



User Manual



Cartridge filling device



one cartridge sleeve each according to version

Item No. 560069 for 360 ml Semco® (Model 990150-A-360)

Item No. 560068 for 180 ml Semco® (Model 990150-A-180)

Item No. 990250-B for 310 ml EURO (Model 990150-B)



Closure cap (Item No. 560710)

Luer-Lock Adapter (Item No. 990063-1_4POM)

Elbow fitting (Item No. F-14A14I-90-PP)

EURO cartridge adapter (Item No. 990204-K)

(only for model 990150-B)



Compressed air hose 6x4 mm

(Item No. C-0042)

4 About your cartridge filling device

- | | | | |
|---|-------------------------------|----|--|
| 1 | Base plate with clamping ring | 7 | Euro cartridge adapter
(Model 990150-B only) |
| 2 | Cartridge sleeve | 8 | Angle fitting |
| 3 | Sealing cap | 9 | Luer-Lock adapter |
| 4 | Compressed air hose | 10 | Small syringe barrel
(not included in scope of delivery) |
| 5 | Manual valve | | |
| 6 | Connecting hose | | |

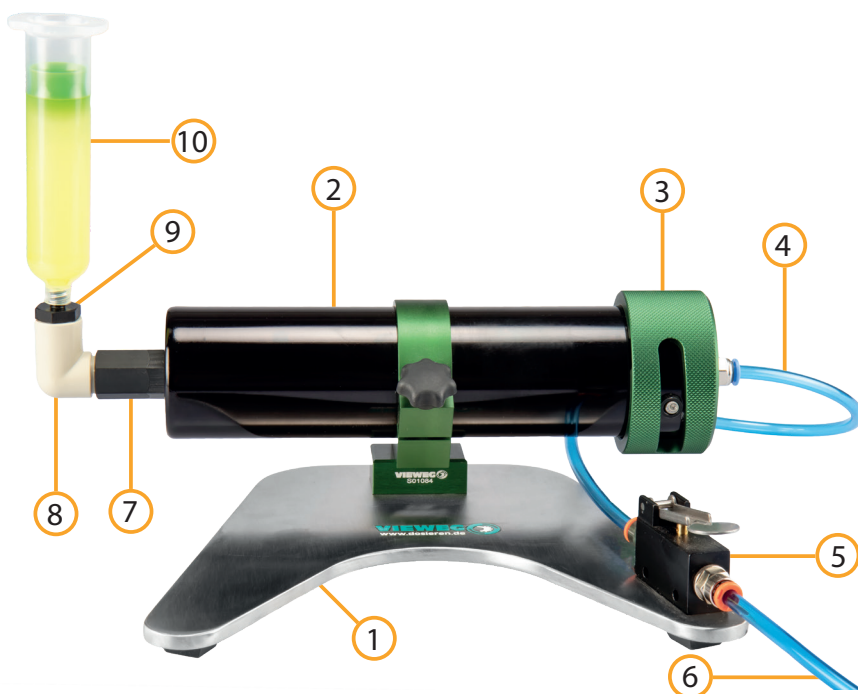


Fig. shows model 990150-B (310 ml Euro cartridge)

5 Preparation and filling process

5.1 Preparation of the filling device

1. Slide the cartridge sleeve into the and screw it on tight.



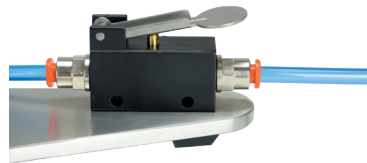
2. Slide your large cartridge with the dispensing material into the cartridge sleeve and screw the elbow fitting on.



3. Close the cartridge sleeve with the cap.



4. Supply the cartridge filling device with compressed air by using the supplied Plug the compressed air hose into the quick-release coupling on the hand valve and connect it to your regulated compressed air system.



5. Open the compressed air supply to the valve at first with very low pressure.
By **lightly** actuating the hand valve (5), you can transport your material to the Luer-Lock adapter.
Close the hand valve again, before your dispensing material runs out of the syringe barrel connector (Luer-Lock adapter).

5.2 Preparing the syringe barrels

1. Insert one piston into each syringe barrel to be filled.
Use a stick, pencil or similar object to push it to the bottom of the barrel.



2. Now turn one of the prepared syringe barrel onto the Luer-Lock adapter.

5.3 Filling procedure

1. Now start the filling process by pressing the hand valve (5).
To prevent air bubbles, press lightly with a stick, pencil or similar against the piston during the filling process.
2. Release the hand valve when the desired quantity has been reached in the syringe barrel.
3. Switch off the compressed air when the filling process is complete.



Fig. shows Model 990150-A-360

6 Maintenance and cleaning

The product is maintenance-free.
Have a repair carried out only by the manufacturer.

Only use dry or damp cloths to clean the housing, never cleaning agents such as petrol or thinner.

7 Disposal

At the end of its service life, dispose of the product in accordance with the applicable regulations statutory provisions.



Electrical parts must not be disposed of with household waste.
According to Directive 2012/19/EU on Waste Electrical and Electronic Equipment (WEEE), these must be returned to the collection points set up for this purpose in order to be reused.

8 Declaration of conformity

CE Declaration of Conformity

- EG-Simple Pressure Vessel directive 2009/105/EG

We, as manufacturer declare under our sole responsibility that the following product to which this declaration relates is in conformity with the following EG / EC directives:

Product: **Device for filling syringe barrels, Aluminium**
Typ: **990150 Series**

Manufacturer: **VIEWEG Dosier- und Mischtechnik**
Gewerbepark 13
85402 Kranzberg
Germany
Tel.: +49 8166-6784-0
Fax: +49 8166-6784-20

The following european standards are used:

- EN 286-1:1998/A2: 2005



Till Vieweg, managing director

Kranzberg, 27.01.2017



VIEWEG GmbH
Dosier- und Mischtechnik
Gewerbepark 13
85402 Kranzberg
Germany
Tel. +49 8166 6784 -0
Fax +49 8166 6784 -20
info@dosieren.de
www.dosieren.de