

## Operating Manual Pressure Dispenser PP300



**TABLE OF CONTENTS**

1 CAUTIONS AND WARNINGS . . . . . 3

2 INTRODUCTION . . . . . 4

3 DESCRIPTION . . . . . 4

4 SETUP AND INSTALLATION. . . . . 8

4 WARRANTY . . . . . 9

## 1 CAUTIONS AND WARNINGS

### CAUTIONS:

- 30 PSI (2 BAR) MAX. PRESSURE.
- EYE PROTECTION REQUIRED.
- DO NOT ATTEMPT TO OPEN LID UNTIL INTERNAL AIR PRESSURE IS RELEASED.
- LID KNOB MUST BE HAND TIGHTENED ONLY.

### WARNINGS:

READ THE MATERIAL SAFETY DATA SHEETS FOR SPECIAL PRECUTIONS FOR THE SPECIFIC MATERIAL BEING DISPENSED. WEAR PROTECTIVE SAFETY EQUIPMENT AS SPECIFIED IN THE MATERIAL SAFETY DATA SHEETS.

CHECK WITH FACTORY IF UNSURE ABOUT DISPENSING MATERIALS OTHER THAN CYANOACRYLATE.

CYANOACRYLATE ADHESIVES ARE SEVERE EYE IRRITANTS AND SKIN BONDERS. IMMEDIATE BONDING OF EYES, SKIN OR MOUTH MAY OCCUR UPON CONTACT. THESE ADHESIVES MAY CAUSE PERMANENT EYE DAMAGE.

AVOID EYE, MOUTH AND SKIN CONTACT. USE FULL COVER SAFETY GLASSES. AVOID BREATHING ADHESIVE VAPORS. PROVIDE ADEQUATE VENTILATION.

IF EYE BECOMES BONDED, IMMEDIATELY FLUSH WITH PLENTY OF WATER FOR AT LEAST 15 MINUTES AND CALL A PHYSICIAN. IF THE EYE IS STUCK SHUT, DO NOT FORCE IT OPEN.

IF SKIN IS BONDED, QUICKLY SOAK IN WARM WATER. DO NOT USE EXCESSIVE FORCE TO FREE BONDED AREA.

WHEN USING FLAMMABLE SOLVENTS, EXTINGUISH ALL SOURCES OF IGNITION IN THE IMMEDIATE WORK AREA AND OBSERVE PROPER PRECAUTIONARY MEASURES FOR HANDLING THE MATERIAL.

NOTE: IN ADDITION TO THE ABOVE WARNINGS, MORE CAUSIONARY WARNING NOTES WILL BE FOUND IN OTHER SECTIONS OF THIS MANUAL WHERE APPLICABLE.

## 2 INTRODUCTION

The PP300-A PRESSURE DISPENSER offers a convenient, easy to use system for dispensing \*cyanoacrylates, as well as many solvents, lubricants and other low viscosity materials. Loosen Clamp Knob, swing Lid open, place container of materials to be dispensed, connect Dip Tube, close Lid, pressurize chamber and begin dispensing. The simplicity and reliability of the PP300-A PRESSURE DISPENSER'S design provides for exceptional performance, minimum maintenance, and easy repair.

### SPECIFICATIONS:

SIZE:	6 x 6 x 10 inches (15.3 x 15.3 x 25.4 cm)
WEIGHT:	9 lbs. (4.1 kg)
MAX OPERATING PRESSURE:	30 psi. (2 bar)

### FEATURES:

- No Tubes through Hinged Lid
- See through Reservoir for material monitoring (Cast Acrylic Reservoir offered as standard, Glass Reservoir available).
- One hand opens and closes Fixed lid.
- Easy to replace, disposable Dip Tube and Dispense Lines.
- Optional integrated on-off Valve assembly available.
- Optional Valve Controller available
- Accepts standard one pound cyanoacrylate bottles.

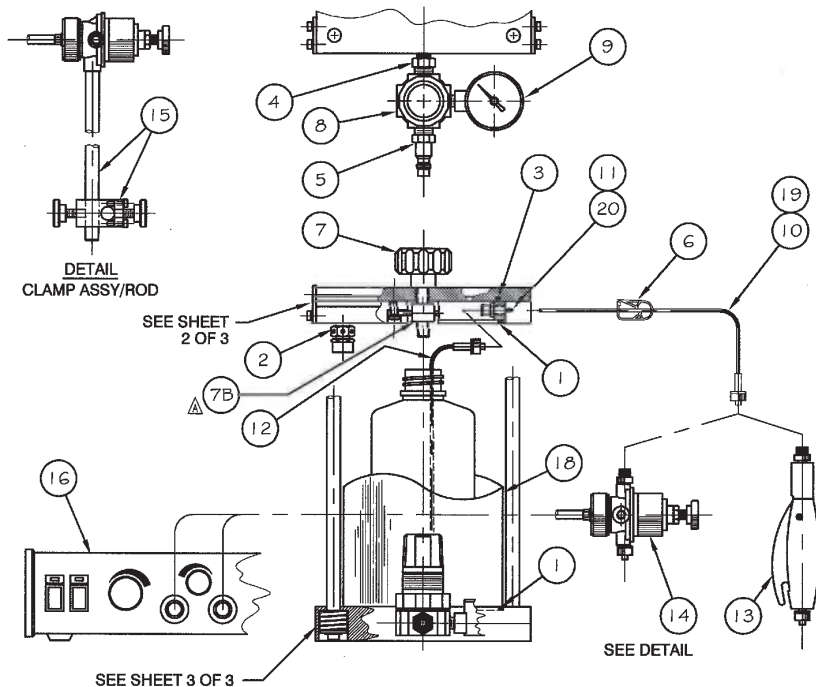
## 3 DESCRIPTION

The PP300-A PRESSURE DISPENSER enables dispensing of low viscosity materials directly from one-pound bottles. Air pressure forces the material from the bottle in the dispensers see through pressure chamber and through a disposable supply line into an optional 700PTPCW PINCH TUBE PEN or 710PTPNM PINCH VALVE assembly. The material flow rate is controlled by an Air Pressure Regulator on the Dispenser Base. The quantity is controlled by the Pinch Valve in the optional Pen or On-Off Valve assembly.

### WARNING:

Cyanoacrylate Adhesives are severe eye irritants and skin bonders. Immediate bonding of eyes, skin or mouth may occur upon contact. These Adhesives may cause permanent eye damage.

Read the material safety data sheets for special precautions for the specific material being dispensed. Wear protective safety equipment as specified in the material safety data sheets.

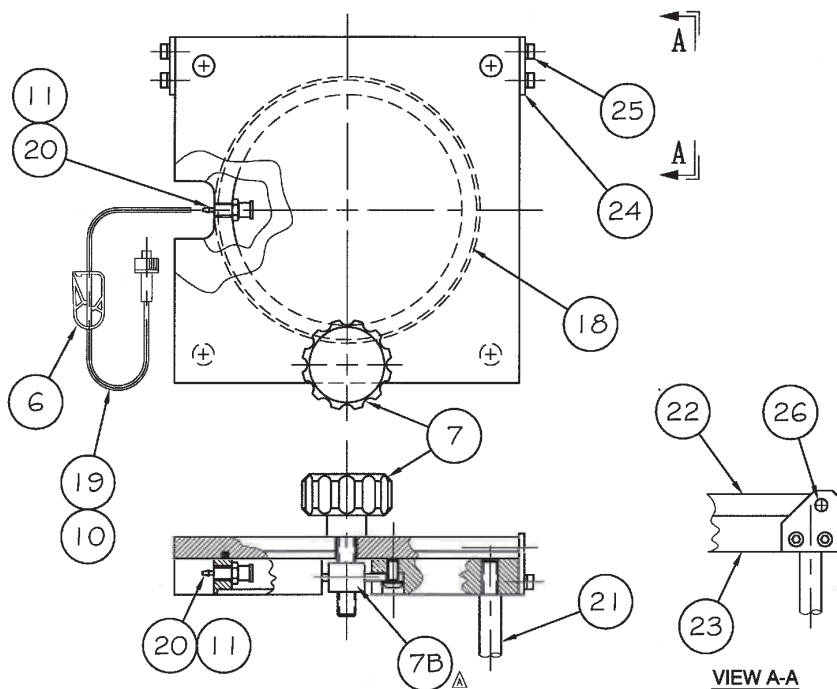
**PRODUCT  
DESCRIPTION**
**PP300-GL-A PRESSURE DISPENSER**
**REVISION**
**A JUNE 8, 1999**


\* OPTIONAL



NO.	PART NUMBER	DESCRIPTION	QTY.	NO.	PART NUMBER	DESCRIPTION	QTY.
9	560611	GAUGE	1	20	560610	LUER FITTING (0.10 I.D.)	*
8	560571	REGULATOR	1	19	560608	DISPENSE TUBE (0.10 I.D.)	*
7B	560612B	BUSHING	1	18	560618	RESERVOIR (Glass)	1
7	560612	KNOB ASSY.	1	16	---	DISPENSER	*
6	560613	CLAMP TUBE	1	15	560605/560606	CLAMP ASSY./ROD	*
5	580108	AIR COUPLING	1	14	710PT	VALVE ASSY.	*
4	560614	REDUCER NIPPLE	1	13	700PT	DISPENSING PEN	*
3	560615	O-RING	1	12	560620	DIP TUBE	2
2	560616	VALVE, RELIEF	1	11	560609	LUER FITTING (0.07 I.D.)	1
1	560792	FLAT SEAL	2	10	560607	DISPENSE TUBE (0.07 I.D.)	1
DRAWN BY: G.O. BEUTEL				DATE DRAWN: 5/15/99		FILE NAME: \pp300gl01a.dwg	

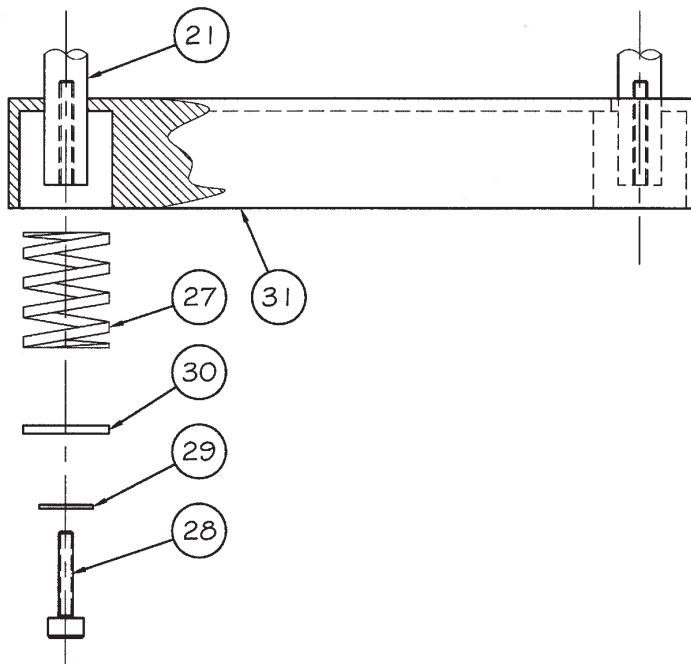
**PRODUCT  
DESCRIPTION**
**PP300-GL-A PRESSURE DISPENSER**
**REVISION**

A	JUNE 8, 1999
B	JULY 16, 2000



\* OPTIONAL

NO.	PART NUMBER	DESCRIPTION	QTY.	NO.	PART NUMBER	DESCRIPTION	QTY.
19	560608	DISPENSE TUBE (0.10 I.D.)	*	26	561586	PIN FOR BRACKET 	2
18	560618	RESERVOIR (Glass)	1	25	561585	ALLEN SCREW FOR BRKT.	4
12	560620	DIP TUBE	2	24	561584	BRACKET FOR TOP SQ. PLATE	2
11	560609	LUER FITTING (0.07 I.D.)	1	23	561583	TOP SQUARE PLATE - THICK	1
10	560607	DISPENSE TUBE (0.07 I.D.)	1	22	561582	TOP SQUARE PLATE - THIN	1
7B 	560612B	BUSHING	1	21	561577	POST	4
7	560612	KNOB ASSEMBLY	1	20	560610	LUER FITTING (0.10 I.D.)	*
6	560613	CLAMP TUBE	1				
DRAWN BY: G.O. BEUTEL    DATE DRAWN: 5/15/99				FILE NAME: \pp300gl02a.dwg			

**PRODUCT  
DESCRIPTION**
**PP300-GL-A PRESSURE DISPENSER**
**REVISION**
**A JUNE 8, 1999**


NO.	PART NUMBER	DESCRIPTION	QTY.	NO.	PART NUMBER	DESCRIPTION	QTY.
29	561580	WASHER (1/2" O.D.)	4	—			
28	561579	ALLEN SCREW (3/4" LONG, 1/8" DIA.)	4	31	561581	BOTTOM SQUARE PLATE (6" X 6")	1
27	561578	FLAT SPRING (1" LONG, 3/4" DIA.)	4	30	561741	WASHER (5/16" O.D.)	4
DRAWN BY: G.O. BEUTEL			DATE DRAWN: 5/15/99			FILE NAME: \pp300gl03a.dwg	

## 4 SETUP AND INSTALLATION

1. Remove pressure dispenser from shipping container and inspect for damage. Refer to users manual Section 7.0 for Warranty Data. Install preassembled Regulator (3) on Rear Base.

### CAUTION:

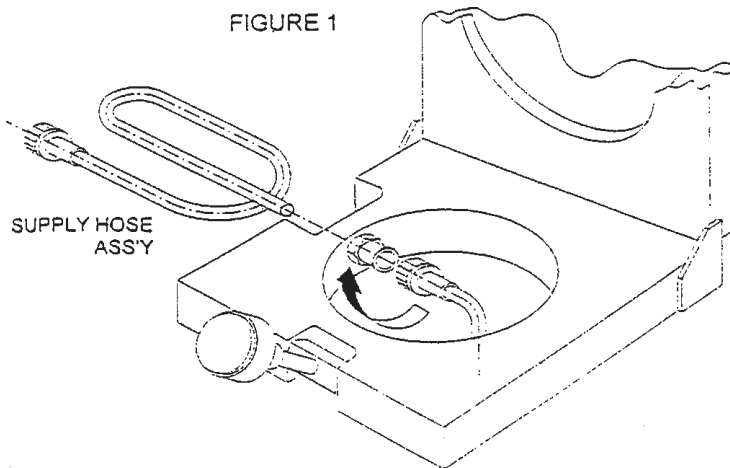
Plant air supply should provide dried, filtered air with pressure not to exceed 100 psi. If plant air is not dry and filtered, an I&J Fiskar Inc. 5 micron Air Filter p/n 580101 or equivalent must be used to meet warranty requirements. Install Filter if required, as close to supply outlet as possible.

2. Insure Pressure Regulator (8) is off (set at zero), turn Knob counter clockwise until it stops.
3. Attach Air Hose from filtered source (see Caution above) to Male Quick Connect Air Inlet Fitting (5) on Regulator at Base of Dispenser.
4. Insert dispense Tube (10) onto Barbed end of Luer Fitting (11) on top side of Dispenser. (refer to figure 1). Insure Tube (10) is covering fitting.

**CAUTION:** Never pour Adhesives or other materials directly into Dispenser. Use Adhesive Bottle or similar containment vessel.

5. Remove Cap and Dip Tube supplied with new Dispenser, insert Tube into Bottle. Discard Tube and Cap (may be saved for future resealing of bottle) (see Section 6.0 Cleaning).
6. Using Dip Tube (12) supplied with Dispenser, insert Tube into Bottle and place Bottle into Reservoir of Dispenser, attach Luer Lock Fitting (refer to Fig. 1). When tightening Luer Fitting (12), support Tube to allow for twisting to be absorbed in fingers and not allow Tube to flail out of Bottle.

FIGURE 1



7. Close Lid, swing Knob Assembly (7) up to vertical position and hand tighten Knob firmly.

**NOTE:** Dispensing Tube must be attached to dispensing option (i.e. Pen or Pinch Tube Valve) before pressure is applied to Dispenser.



## 4 WARRANTY

Manufacturer warrants this product to the original purchaser for a period of one year from date of purchase to be free from defects in material and workmanship, but not against damages by misuse, negligence, accident, faulty installation, abrasion, corrosion or by not operating in accordance with factory recommendations and instructions. Manufacturer will repair or replace (at factory's option), free of charge, any component of the equipment thus found defective, or return of the component PREPAID to the factory during the warranty period. In no event shall any liability or obligation of Manufacturer arise from this warranty exceed the purchase price of equipment. This warranty is only valid if the defective PP300-A Pressure Dispenser is returned as a complete assembly without physical damage. The manufacturer's liability, as stated herein, cannot be altered or liable for consequential or incidental damages. A return authorization is required from I&J FISNAR INC. prior to shipping a defective unit to the factory.

Manufacturer reserves the right to make engineering or product modifications without notice.

Send warranty returns to:



Vieweg GmbH  
Dosier- und Mischtechnik  
Gewerbepark 13  
85402 Kranzberg  
Tel. +49 8166 6784 - 0  
Fax +49 8166 6784 - 20  
info@dosieren.de  
www.dosieren.de